



Building Bridges

The visual journey of the new Northern Road bridge,
Cosham, Portsmouth

Building Bridges

The visual journey of the new Northern Road bridge,
Cosham, Portsmouth

Compiled by Elaine Tribley

Acknowledgements

Portsmouth City Council would like to thank Medina Primary School, Cosham Handicraft and Embroidary Group, Portsmouth Youth Parliament, Lakeside Harbour, Velocity Cycles, Cosham Library and Cosham Community Centre for their involvement in the artwork designs for the new bridge. We would also like to thank Daniel Cirneanu, Dumitru Dutu, Matt Ferrans and Sonny Finnie for all their assistance with the artwork on site.

Building Bridges; The visual journey of the new Northern Road bridge, Cosham, Portsmouth, compiled by Elaine Tribley, Published in an edition of 50, April 2014.

Portsmouth City Council
Civic Offices,
Guildhall Walk,
Portsmouth PO1 2AL
023 9282 2251
www.portsmouth.gov.uk

Osborne
Fonteyn House
47- 49 London Road
Reigate, Surrey
0800 025 8008
www.osborne.co.uk

Text and design by Elaine Tribley, photography by Ashley Chaplin, Graham Stevens, Eleni Oulasoglou and Elaine Tribley.

All rights reserved. No part of this book may be used or reproduced in any manner without written permission from the publisher, except in the context of reviews. The publisher has made every effort to contact all copyright holders. If proper acknowledgement has not been made, we ask the copyright holder to contact the publisher.

© copyright Portsmouth City Council, the artists and authors





Northern Road Bridge was constructed in 1927 to carry the A3 (now A397) over the railway between Portchester and Cosham Railway Stations. The bridge, owned by Portsmouth City Council, forms an important north - south route for traffic leaving and accessing Portsea Island.

1,500 vehicles use Northern Road bridge per hour at peak times. On average, 60 buses use the bridge every hour.

An inspection of the bridge in 2005 showed that it was in a very poor condition and would need to be replaced. In order to prevent acceleration of the deterioration, concrete blocks were used to narrow the bridge down to one lane in each direction.

After a successful bid to the Department for Transport for 11m to replace the bridge, work began in September 2012.

The new bridge will benefit the community for at least the next 120 years. Artwork, running along the length of both of the bridge's parapets is the result of artist, Elaine Tribbley's collaboration with local community groups and pupils from Medina Primary School.



The artwork gives the bridge its own unique identity and it is hoped that as a result, the local community have been given a sense of ownership.

<http://northernroadbridge.weebly.com/>

NORTHERN
RD CLOSED
FOLLOW
DIVERSION



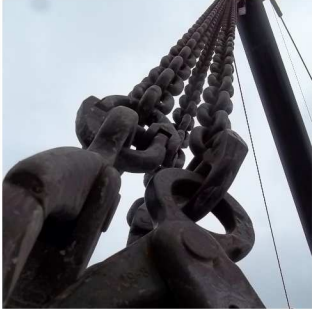


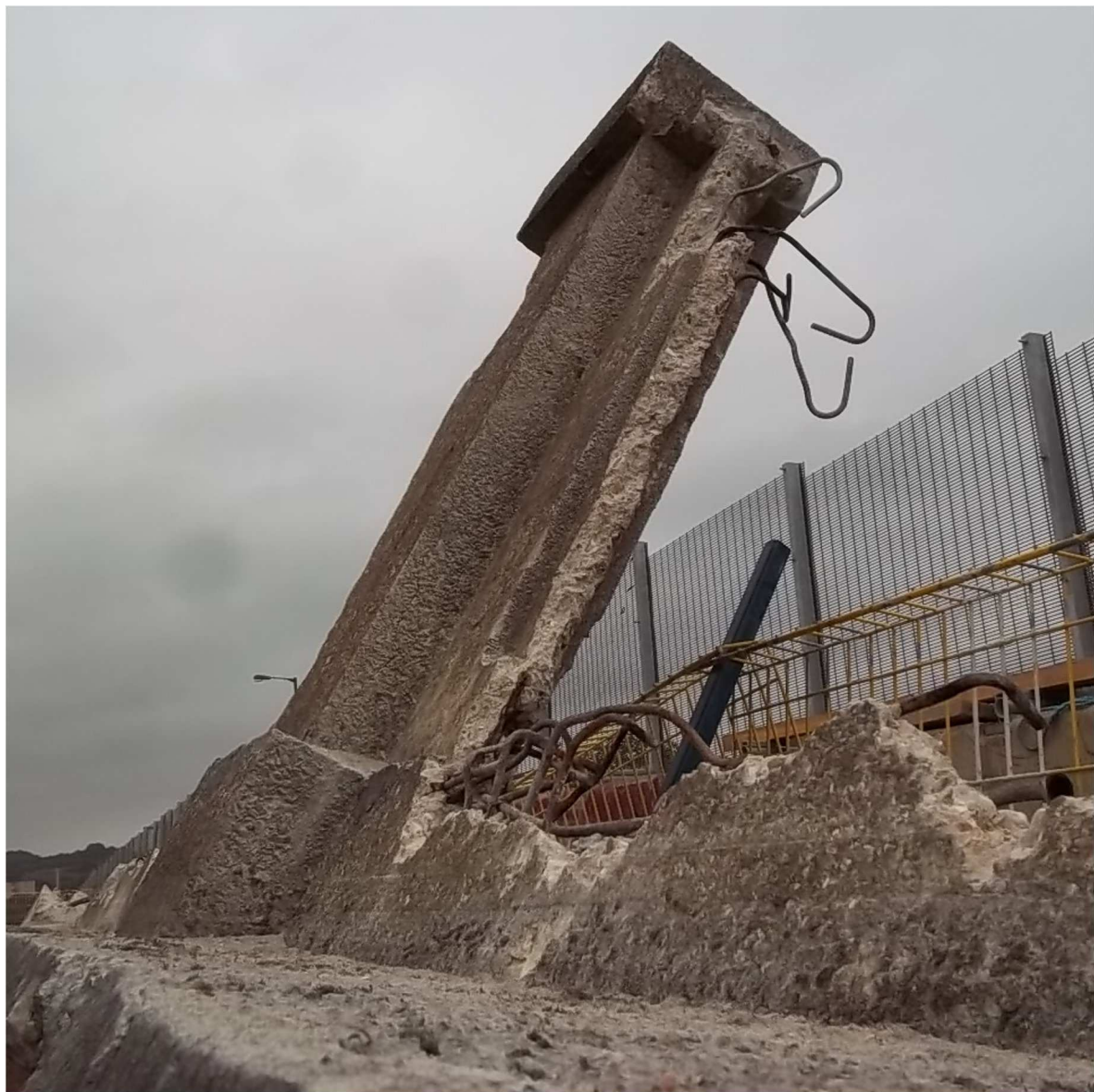












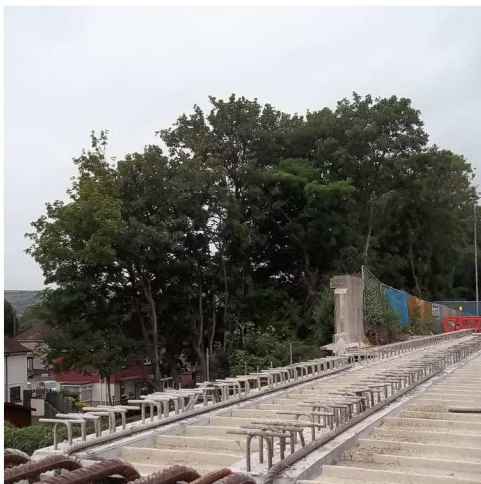
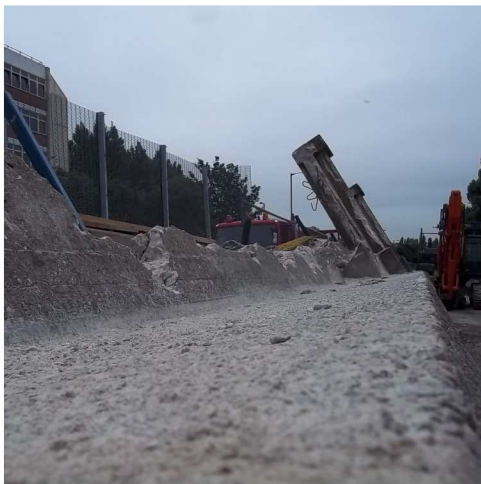










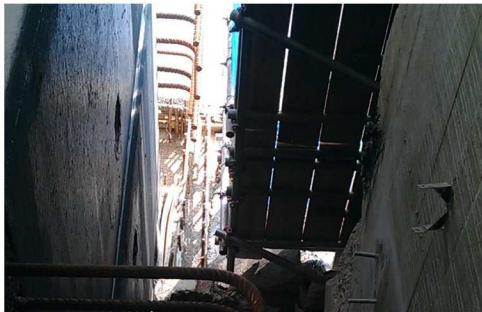


















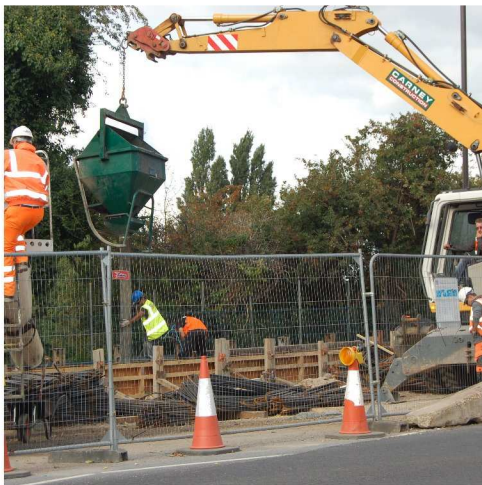
























The Artwork Journey

